

## All-in protection system for EPS & XPS foam decoration

### Installation of outdoor profiles

Profiles protected with DecorFlex Coat Hybrid can be cut by a saw.



Bevel the edges of profiles.



At the adjacent surfaces of the polystyrene profiles, beneath the coating, mill a groove to a depth of about 5 mm.



To stick on outdoor facade profiles use DecorFlex Glue two-component cement-dispersive glue.



Completely cover the back and side surfaces of the elements with DecorFlex Glue.



Use tent pegs to fix heavy, voluminous profiles.



Remove excess glue. Wait for complete drying of the adhesive.



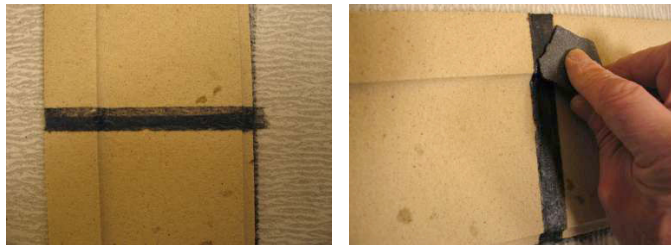
Fill the gaps with DecorFlex Seal sealant mass. This ensures protection against water.



Fill the gap between the wall and mounted profiles with DecorFlex Seal.



Polish dried spots with sandpaper.



Use DecorFlex Coat Hybrid to fill up large holes.



We recommend covering all the prepared foam elements with DecorFlex Gel structural gel. It's designed to meliorate and prime the surface before painting. To get the full structure put two layers.



After complete drying the surface can be painted with highly flexible outdoor dispersion paint.



More info, data sheets: [www.nagyformatumu.hu/en/decorflex](http://www.nagyformatumu.hu/en/decorflex)

Distributor:



**Digit Bt.**

H-1125 BUDAPEST, ISTENHEGYI ÚT 29. • TEL.: +36 1 224.0360 • EU VAT No.: HU-29823178  
WEB: WWW.NAGYFORMATUMU.HU • WEBSHOP: SHOP.DIGIT.HU • E-MAIL: DIGIT@DIGIT.HU